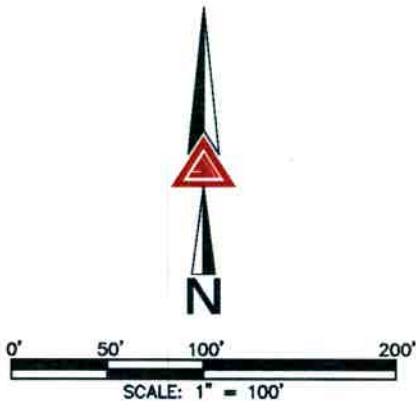


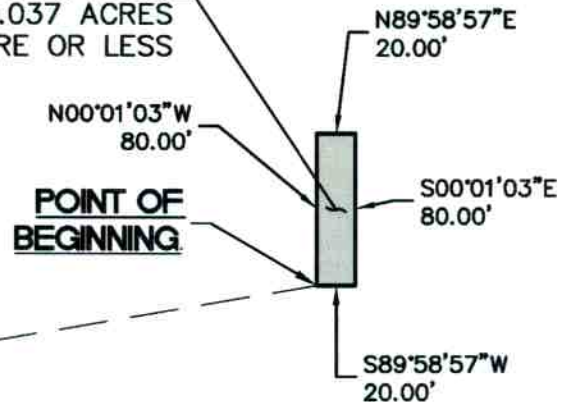
ILLUSTRATION TO EXHIBIT A

SW 1/4 SEC. 29,
T.4S., R.65W., SIXTH P.M.

HARVEST & JEWELL LLC
REC.# B8090223



PARCEL CONTAINS
1,600 (SQ.FT.)
0.037 ACRES
MORE OR LESS



N80°11'47"E 584.14'

(BASIS OF BEARINGS)
SOUTH LINE OF SW 1/4 SEC. 29
S89°48'06"E 2654.32'

POINT OF COMMENCEMENT

SW COR., SEC 29
T4S, R65W, 6TH P.M.
FOUND 1-1/2" ALUMINUM CAP
IN 2-1/2" PIPE-ILLEGIBLE

SOUTH 1/4 COR., SEC. 29
T4S, R65W, 6TH P.M.
FOUND NO. 6 REBAR WITH 3-1/2"
ALUMINUM CAP STAMPED "LS 27609"

NOTE: THIS DRAWING DOES NOT REPRESENT A MONUMENTED LAND SURVEY AND IS ONLY INTENDED TO DEPICT THE ATTACHED LEGAL DESCRIPTION.

PATH: Q:\DWG\EXHIBITS\
DWG NAME: DP 4.DWG
DWG: JEL CHK: JRW
DATE: 10/1/2021
SCALE: 1"=100'



300 East Mineral Ave.
Suite 1
Littleton, Colorado 80122
Phone: (303)713-1898
Fax: (303)713-1897
www.aztecconsultants.com

PARCEL EXHIBIT
SW 1/4, SEC. 29, T4S, R65W, 6TH P.M.
AURORA, COLORADO

JOB NUMBER 169021-01

2 OF 2 SHEETS